

The Micro Fence Circle Jig

12970 Branford Street Unit M, Arleta, CA 91331 Phone 1-800-480-6427
 Email: microfence@microfence.com Website: www.microfence.com

Circles Larger than 48" (without Longer Guide Shafts): Out of the box, your Circle Jig can make circles up to just over 48", depending on the diameter of your router's base and, of course, the size of the bit you are using. If your job requirement is greater than 48", longer guide shafts can be installed, or the jig may be mounted on any length extension you wish to fabricate using the 6-32 threaded holes that are on the underside of the trammel bars, (See Fig. 6). Securely fasten **both** rear and spindle-assembly bars to the end of a strip of approximately 1/4" thick material, (masonite, plastic, plywood or aluminum), that measures 3 1/2" to 4" in width. You should utilize all four tapped holes to maximize rigidity. Use flat-head screws and counter-sink them so your jig will slide smoothly over the work surface. Drill a hole, or series of holes for the trammel point on the center-line of this extension strip at whatever position your job requires.

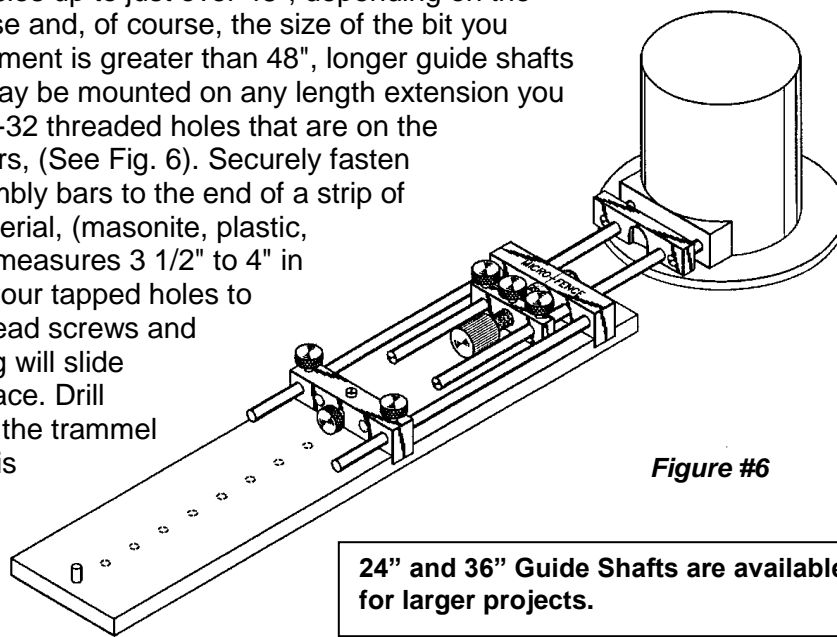


Figure #6

24" and 36" Guide Shafts are available for larger projects.

(See Figures 6 & 7)

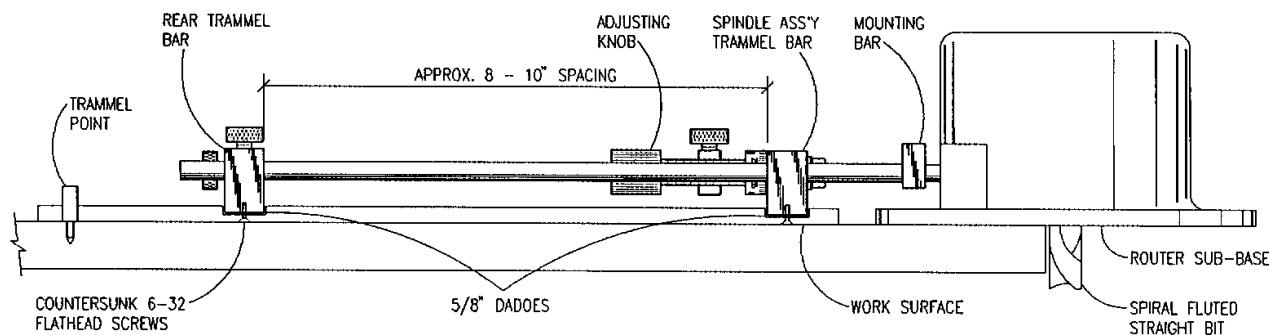


Figure #7

Note: Pay particular attention to keep the entire jig parallel to the work surface. It may be necessary to dado your extension strip with 5/8" slots in which to mount the circle jigs trammel bars. We recommend an 8" to 10" spacing. (See Figure 7).

Note: When cutting larger circles, it may be advisable to enlist the help of another pair of hands to keep pressure downward on the centerpoint while you operate the router. This will eliminate the possibility of the trammel point lifting. A "dry-run" with the router switched off should tell you when this would be preferable.